






SR S 60 TON M+F

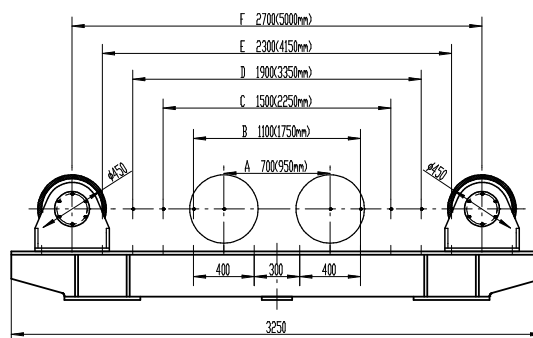
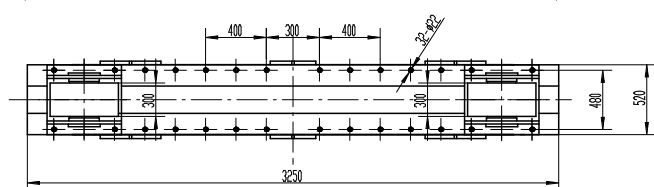
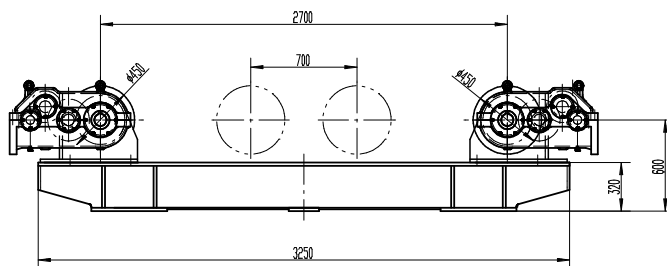
 **DESCRIZIONE**
 Posizionatore a rulli.
 Portata 60000 kg.
 Diametri da 600 a 5000 mm.
 Azionamento con motore elettrico a corrente alternata, con inverter e riduttore.
 Completo di pulsantiera con cavo 10 m.

 **DESCRIPTION**
 Roller positioner.
 Load 60000 kg.
 Diameters between 600 and 5000 mm.
 Roller drive with AC electric motor with inverter and gearbox.
 Includes hand control with 10 m cable.

 **DESCRIPTION**
 Positionneur a rouleaux.
 Portée 60000 kg.
 Diamètres entre 600 et 5000 mm.
 Actionnement avec moteur électrique à courant alternée, avec inverter et réducteur.
 Comprend une commande manuelle avec un câble de 10 m.

 **BESCHREIBUNG**
 Rollenbockdrehvorrichtung.
 Tragkraft 60000 kg.
 Durchmesser von 600 und 5000 mm.
 Antrieb mit AC-Elektromotoren und Inverter und Untersetzung.
 Inklusive Handschalter mit 10 m Kabel.

 **DESCRIPCIÓN**
 Posicionador de rodillos.
 Portal 60000 kg.
 Diámetros de 600 a 5000 mm.
 Accionamiento por motores eléctricos de corriente alterna, con inverter y reductor.
 Incluye mando con cable de 10 m.



Q ton	D min D max mm	No.	G mm	D mm	L mm	H mm	mm/min	A-F mm	Power supply - volt	Lmax xWxH mm	F kg	M kg
60	600-5000	8	220	450	2900	801	0,1-1,0	650-2250	3 PH - 400	2800x715(505)x801	950	1325